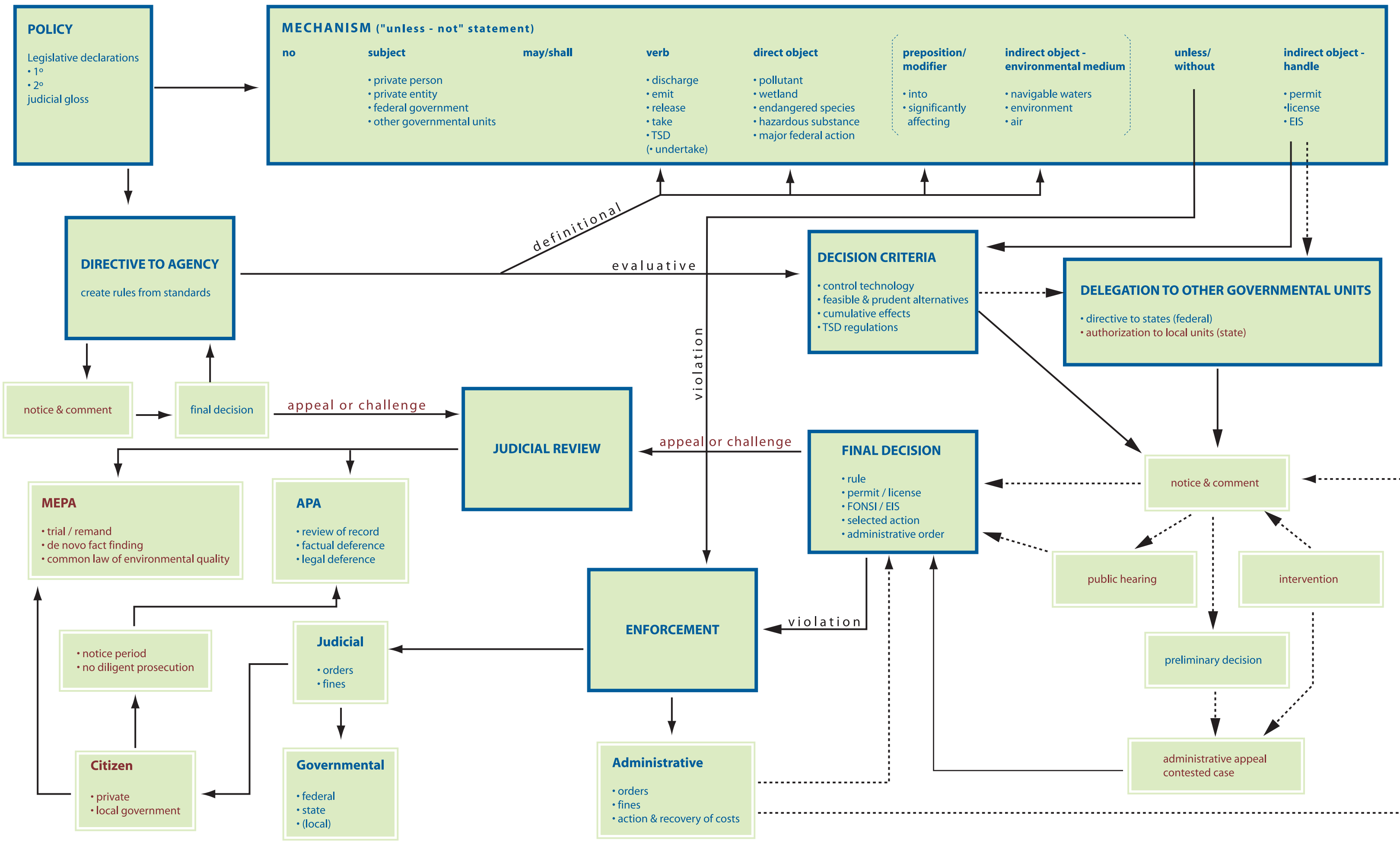


# ARCHITECTURE OF ENVIRONMENTAL STATUTES



Red text indicates points where public has access to regulatory system.

**ORGANIZING PRINCIPLES**

**LIMITING PRINCIPLES**

Content by: Chris Bzdok, Olson, Bzdok & Howard, P.C.  
Layout by: Remy Champet  
© 2008. All rights reserved.